

20/20 SeedSense Installation on a CNH 1200 series Planter

To mount your Row Unit Modules on a CNH 1200 series planter, locate the hole in the goal post on the right side of the row unit (while facing forward from the back of the planter). Test mount the RUM upside down from the usual orientation. Clip off any tabs that are necessary for the RUM to sit flush with the goal post. Remaining tabs should help hold the RUM vertical. For further details, see pages 57-60 of the SeedSense Owner's Manual.

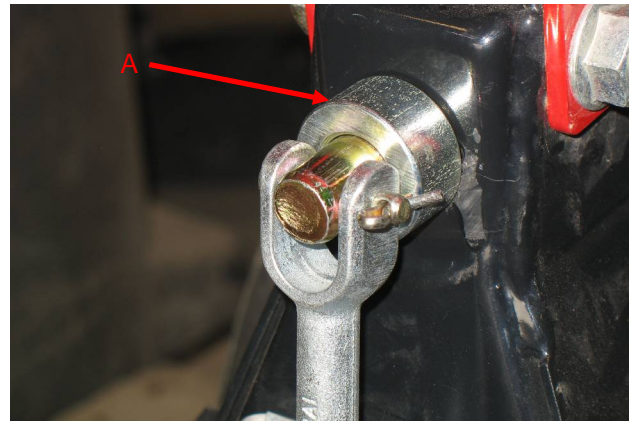


The ladder rack provides a mounting location for the vacuum sensor and a place to gather the wires and connectors out of the way of moving parts. Since the RUM is mounted upside down, it is not possible to mount the ladder in a vertical position. The ladder will mount horizontally as shown at left. For further details, see pages 57-62 of the SeedSense Owner's Manual.

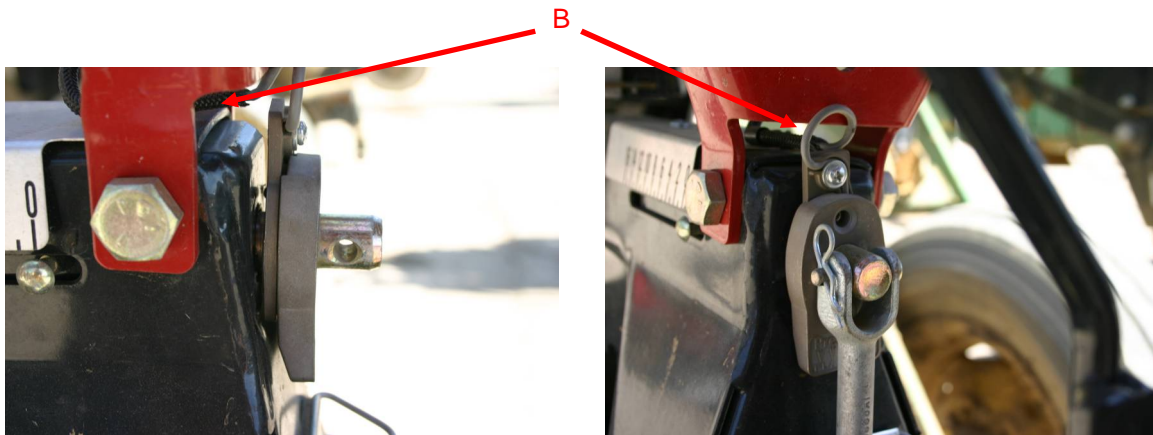
The bushing at right is used to measure down force on a CNH 1200 series row unit. The bushing connects to the Row Unit Module in the same way as other load sensors.



To mount the Load Sensor, remove the handle on the depth adjustment screw and then remove the round bushing (A) from the shaft.



Mount the Load Sensor as shown at left. Feed the wire from the bushing through the bracket (B) to the interior of the row unit. Reattach the handle on the depth adjustment screw.



The wire connecting the Load Sensor to the RUM should be secured to the screw with a P-clamp (C). Leave some play in the wire between the Load Sensor and the P-clamp as shown above. Use the four adhesive cable mounts to secure the wire to the side of the row unit, out of the way of moving parts (D). Connect the wire from the Load Sensor into the matching connector from the RUM (E).

