

Technical Bulletin: Using 20/20 SeedSense as Primary Monitor on SeedStar 2 systems



March 2010

Problem: SeedStar 2 system shows Variable Rate Drive motor warnings when RowFlow is running the system.

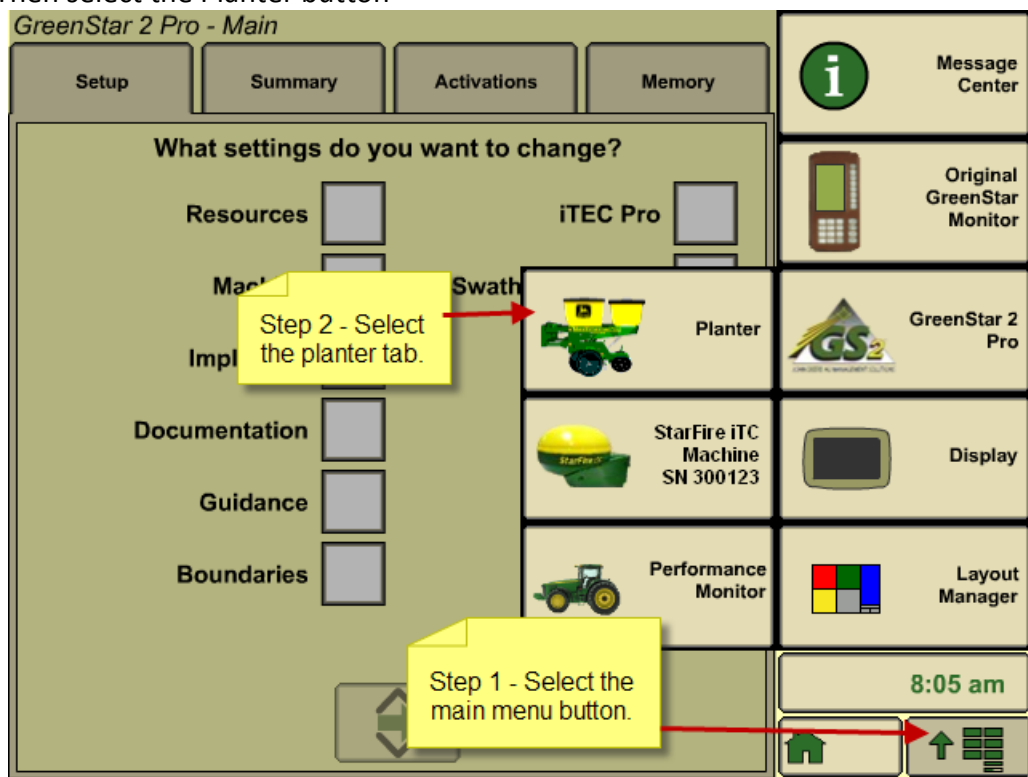
SeedStar 2 system tries to manage RowCommand clutches when RowFlow is running the system.

Solution: Proper setup in the GS2 system will be required for proper operation.

On the GS2

Select the Main Menu button

Then select the Planter button

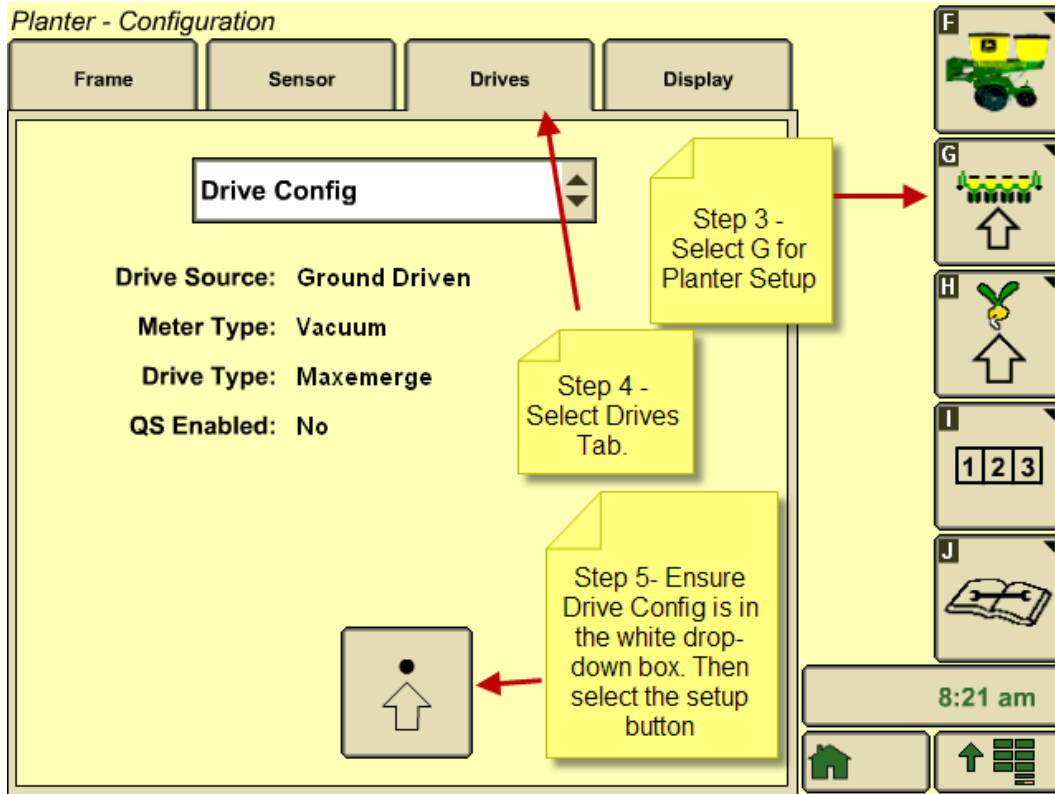


Once the Planter – Configuration screen shows, you will then select the G button for Planter – Setup.

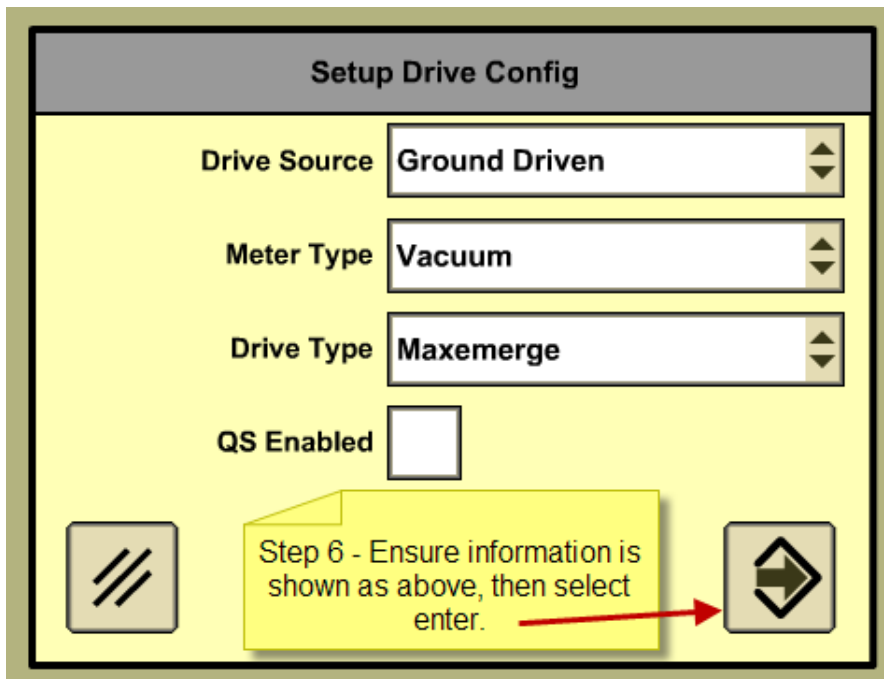
Select the Drives tab from the selection across the top.

Ensure that Drive Config is in the white drop-down box.

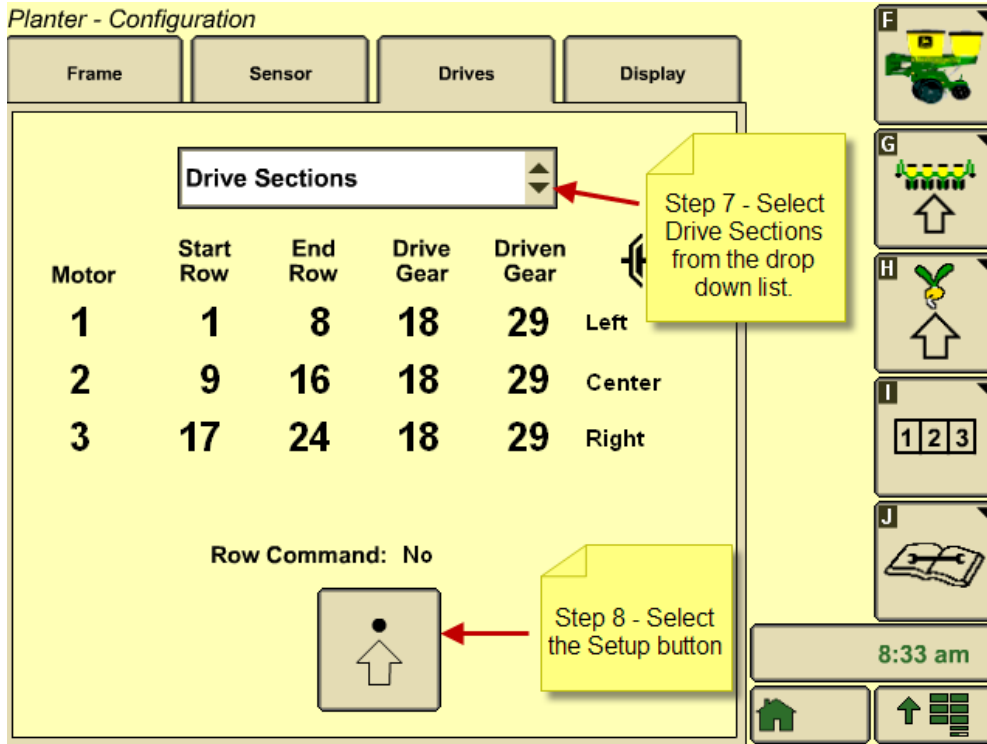
Select the Setup button from the bottom of the page.



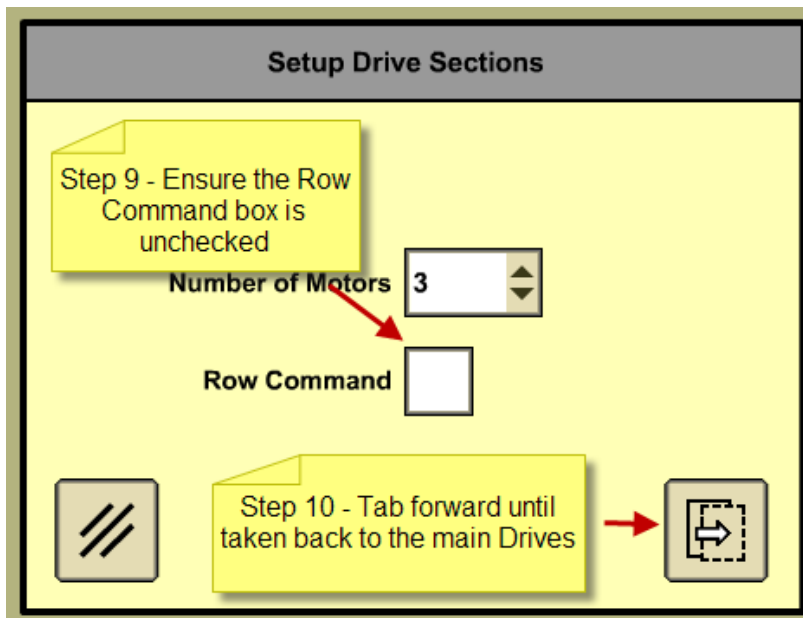
When the setup button is selected, the following page will display. Ensure all information is as shown below.



Once you select Enter, the display will go back to the Drives page.
 Select the white drop down box and select Drive Sections.
 Then select the Setup button at the bottom of the page.

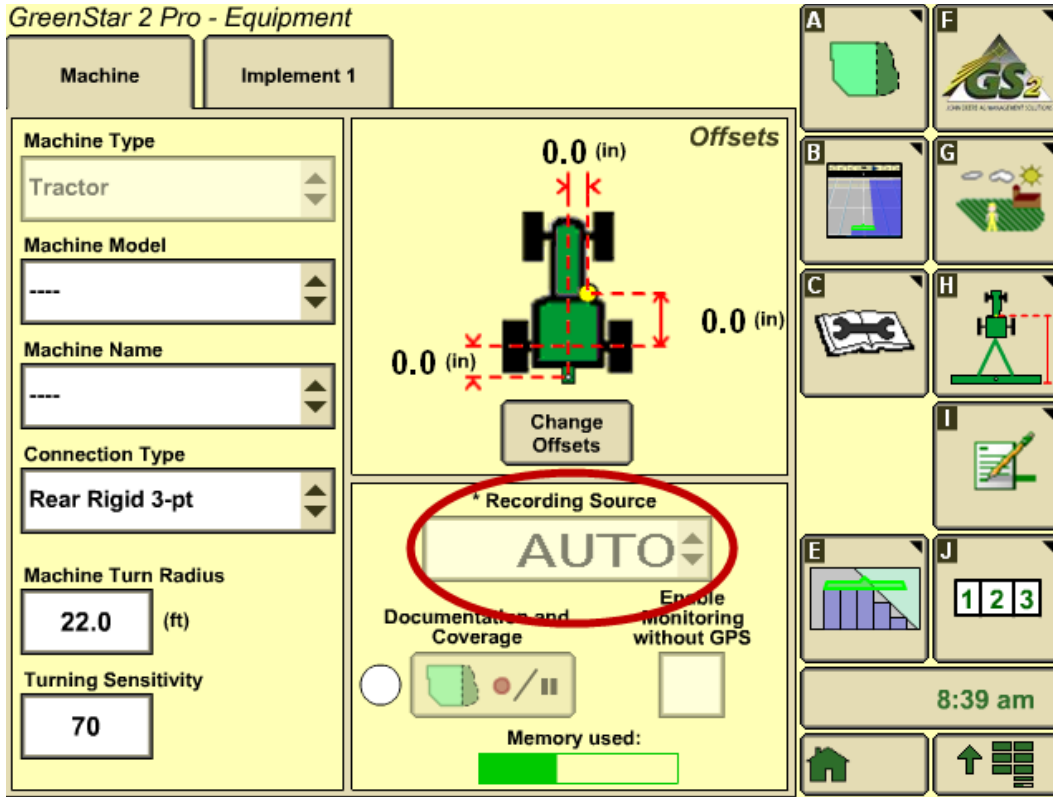


Once the setup Drive Sections pages displays, uncheck the Row Command box, then tab forward until system returns to main display page.



Verify Recording source for GS2 system

Select the Main Menu button
Then select the GreenStar 2 Pro button
Select tab H
Verify Recording Source is set to AUTO



System should be set correctly at this point. If the system requests a shut down, follow prompts and restart.

Equipment Information and Variety information will need to be entered in both the GS2 2600 and 20/20 SeedSense systems for proper recording of operations.

For additional information, visit www.precisionplanting.com or call 309.925.5050.

This information is provided as a resource only and based on current GS2 system software. Operating system software should always be updated prior to planting on any system

GreentStar 2 and RowCommand are Registered Trademarks of John Deere & Company