

# CNH 24" Parallel Arm Extension Kit Instructions

**Part#: 726685 - CNH 24" Parallel Extension**

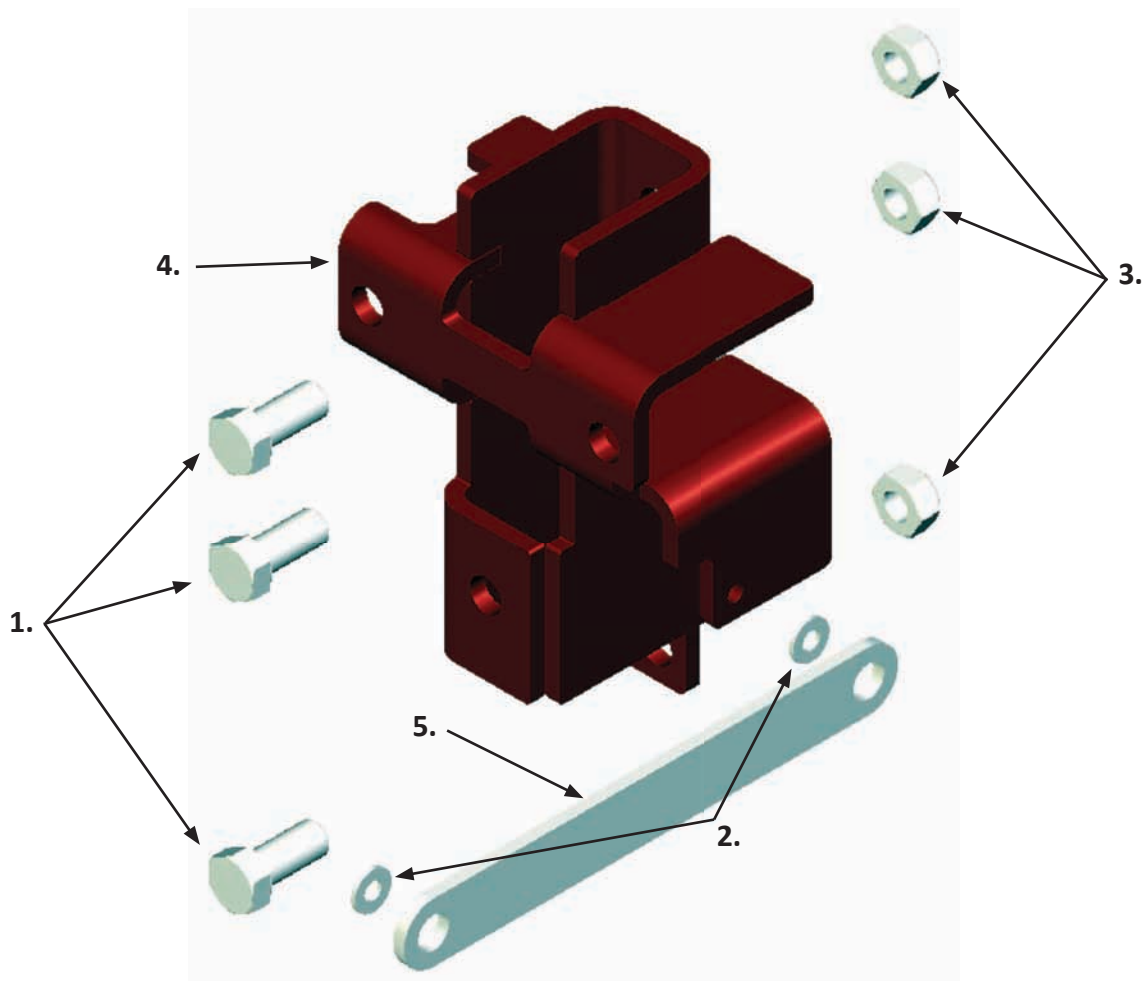
**These instructions should be completed within the process of the installation instructions received with your row unit conversion kits.**

This kit is intended to enable the installation of Precision Planting AirForce components on CNH row units with 24" parallel arms. This kit does not encompass the requirements for compatible parallel arms. This kit is solely designed to provide the spacing required between the frame mounting plate ('W'-plate) and the AirForce bracket.

## **Extension Kit Components**

Item	QTY	Part Number	Part Name	Description
1	3	13206	Bolt	1/2" X 1.125" GRD5 Bolt ZN
2	2	33078	Washer	1/4" SAE Flat ZN
3	3	37268	Hex Nut	1/2" Top Lock Nut ZN
4	1	726678	Spacer	Case 24" Parallel Arm AirForce
5	1	726683	Link	Case 24v" Parallel Arm Stabilizer

Quantities are given per row.



Some of the hardware shown in this picture is provided with the row unit conversion kit.

# CNH 24" Parallel Arm Extension Kit Instructions (Continued)

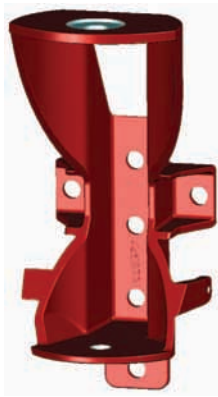
**Part#: 726685 - CNH 24" Parallel Extension**

**These steps should be completed between steps 1 and 2 of the row unit conversion instructions.**

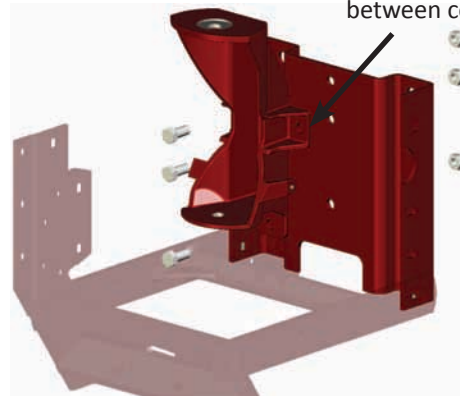
Once the row unit is ready to accept new components, begin by installing the CNH 24" Parallel Arm Spacer (726678) onto the planter frame using the 1/2" X 1.125" GRD5 Bolts (13206). Note the multiple mounting locations available on the Case Air Spring Head Mount (726672); to facilitate mounting to various 'W' plate designs. The images in the primary instructions reference a 'W' plate with the mounting locations vertically aligned in the center of the plate, you should use the recommended holes for your 'W' plate design. The 726678 Spacer bracket will be installed onto the 'W' plate so that the Head Mount bracket may be properly installed.

Secure the 726678 Spacer bracket to the 'W' plate using the three provided 1/2" X 1.125" GRD5 Bolts and 1/2" Top Lock Hex Nuts.

**At this point continue with the primary row unit conversion instructions at step #2, with the exception of installing the Case Air Spring Head Mount (726672) onto the 726678 Spacer bracket instead of the 'W' plate as stated.**

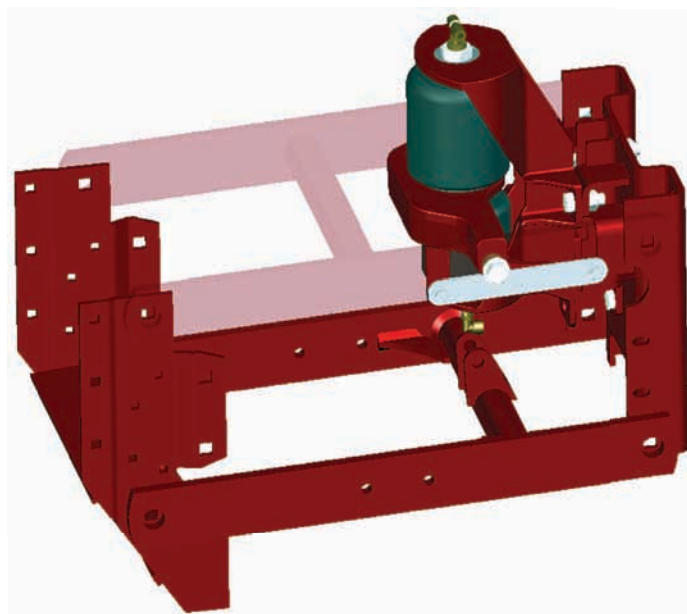


Case Air Spring Head Mount (726672)



Case Air Spring Head Mount (726672) and 1/2" X 1.125" GRD5 Bolts (13206)

Complete Row Unit Conversion



## CNH 24" Parallel Arm Extension Kit Instructions (Continued)

**Part#: 726685 - CNH 24" Parallel Extension**

Continue with these instructions *in place* of step #5 of the primary instructions.

Install the Case 24" Parallel Arm Stabilizer Link between the Air Spring Head Mount (726672) and the Air Spring Base Mount (726673). Use the Stabilizer Link provided with this kit *in place* of the Case 14" Parallel Arm Stabilizer Link provided with the conversion kit. Secure the Stabilizer Link using the hardware supplied with the row unit conversion kits:

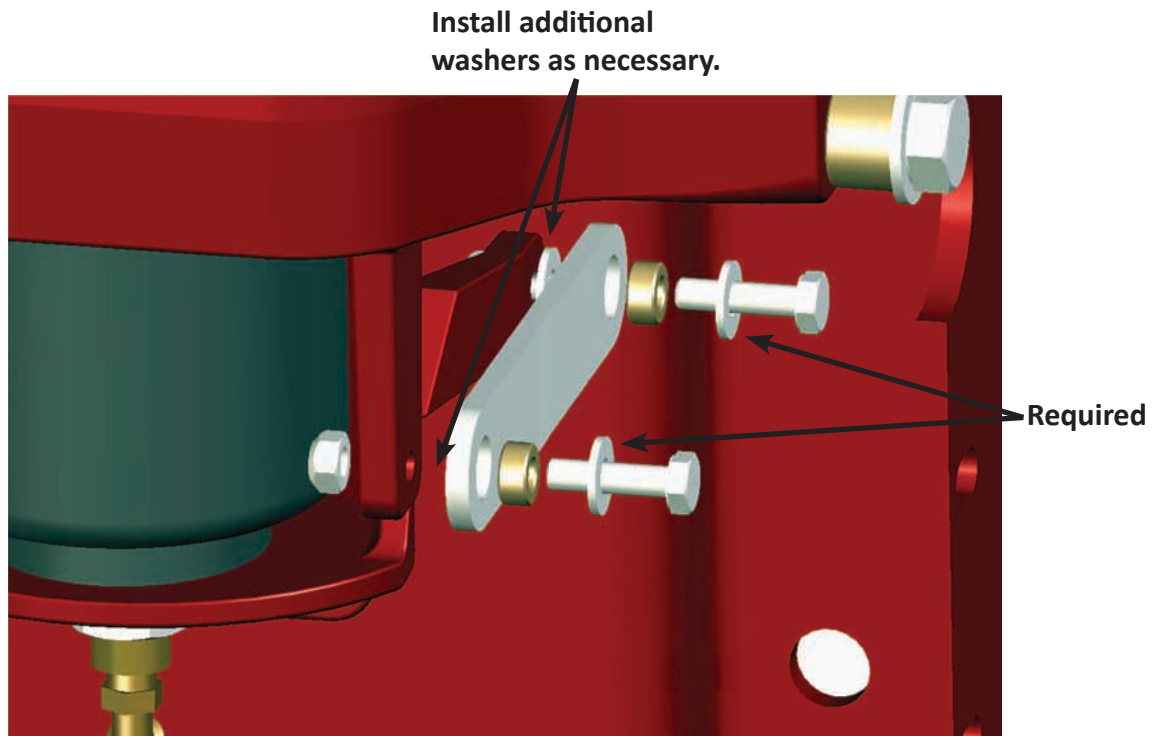
Two – ¼" X 1" GRD 5 Bolt ZN (13005)

Three – ¼" SAE Flat Washers (33078)

Two – ¼" Top Lock Nut ZN (37260)

Two – ¼"ID X ½"OD X 0.23"L Bushings (726574)

**Note:** two washers are required for installation. A third washer is included in the hardware pack for the conversion kit, two additional washers are included within this kit. These washers may be used to shim out the link *as necessary* to improve alignment and provide clearance around the cast link arm (installed behind Stabilizer Link on Head Mount casting).



At this point continue with the primary row unit conversion instructions at step #6.