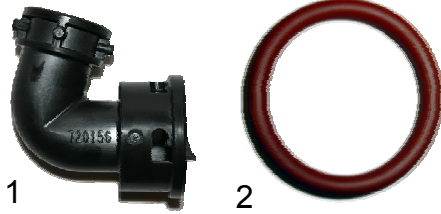


Pro-Series Elbow Kit Installation Instructions

Parts List

1. Elbow (4)
2. Rubber Seal (4)



- Fits all JD 1790 planters with 15" or 30" Row spacing.
- On the original JD Meter the tube on the center four rows are turned toward the back to fit under the center fill hopper. (Fig. A & B)
- The elbow kit is what replaces that bend on the eSet® meter.

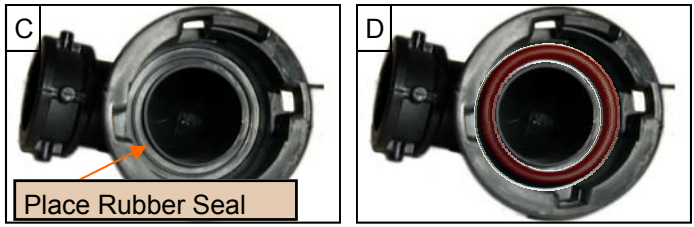
Forward

Back

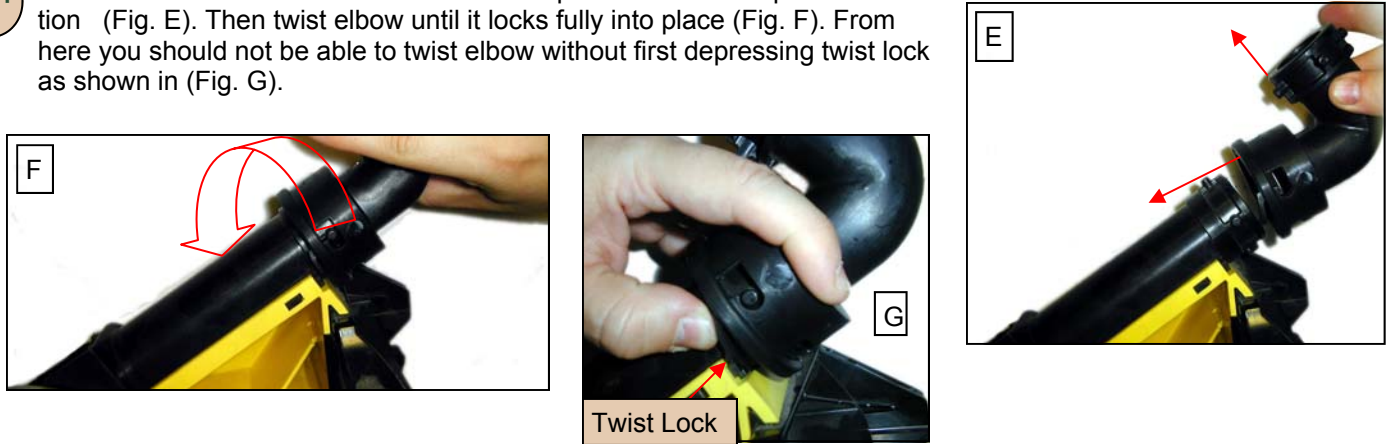
John Deere Vacuum Meter

Step 1 Elbow Installation.

Take the four Rubber Seals and place them in the larger end of the elbow until they sit flush with the bottom. (Fig. A & B)



Place elbow on the end of the d-tube with top of the elbow in upward direction (Fig. E). Then twist elbow until it locks fully into place (Fig. F). From here you should not be able to twist elbow without first depressing twist lock as shown in (Fig. G).



After you have installed elbow on to d-tube, replace meter onto the planter and connect filler tube. This is how the finished elbow will look like on the eSet® meter (Fig. H).

