
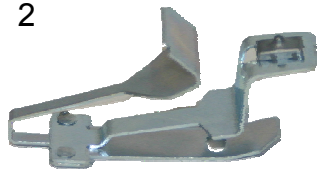
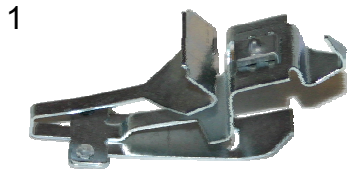


# Extractor Installation Instructions

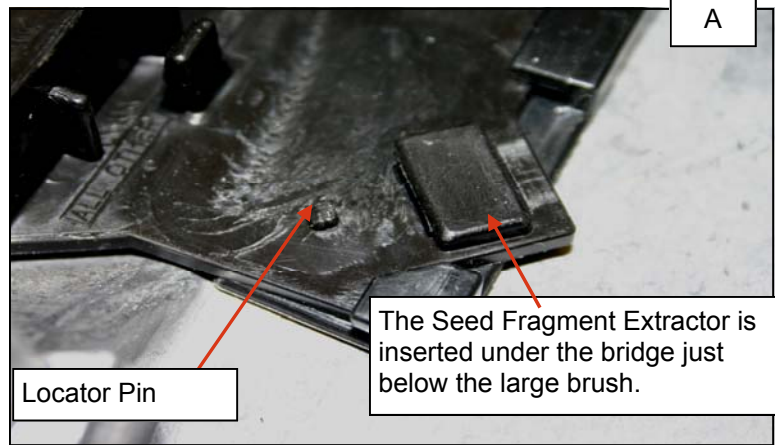
## Parts List


1. Seed Fragment Extractor (720185)  
 (Use only with 720003 Corn Disk)
2. Specialty Fragment Extractor (720117)



**Step 1 Seed Fragment Extractor Installation.**  
 The Seed Fragment Extractor is inserted at the bottom right corner of the liner (Fig A)

**Step 2 Seed Fragment Extractor Installation.**  
 Slide the component underneath the plastic bridge and over the locator pin until it locks into place (Fig B).



**Note:**  
 If the extractor is installed properly you will see a line going through the center of the holes. (Fig. C) If the line does not go through the center of the holes, check extractor placement for a bent or broken extractor.

